

Turn Key Greenhouse Kits 1.888.Suntex.1 suntexcp.com ON FL NJ

Thank you to receive information and quotation on our Greenhouse provided at an attractive price. Team Suntex can provide you a business plan mainly tailored around greenhouse tomato, pepper, and/or cucumber production, and then we provide our growers the right tools and equipment ideal for an optimum greenhouse growing environment.

All our Greenhouses are stamped, sealed and certified by our Canadian Engineer according to the NGMA (North American Greenhouse Standards). Based on your soil foundation, local climate we will build your Greenhouse ideal to enhance your profits, like many growers in Europe, Mexico, Japan and N. America.

You, the discerning grower seek the most up-to-date greenhouse design with the best practice of energy efficiency, and climate control with minimal labor costs, check out these features and their direct benefits to growers like you.

- We provide the highest degree of condensate control by the proper shape and curve of our roof arch. After extensive testing of all conceivable existing arch designs and profiles we have selected the roof arch that has proved to be the best for condensate run-off from the inside of the roof. In addition our arch is designed to eliminate puckering of the poly increasing its life span.
- Condensate is guided from the gothic peaked arch via the drip-catching polylock to the sidewall of the gutter and then to the drip gutter that we provide under every gutter.

Unique to PBL the Gable End Arches use I beam strength by welding an extra 1" x 3" to the side. This reinforced arch will not flex from the pull of the inflation. Because of this extra strong design only one diagonal brace is required.

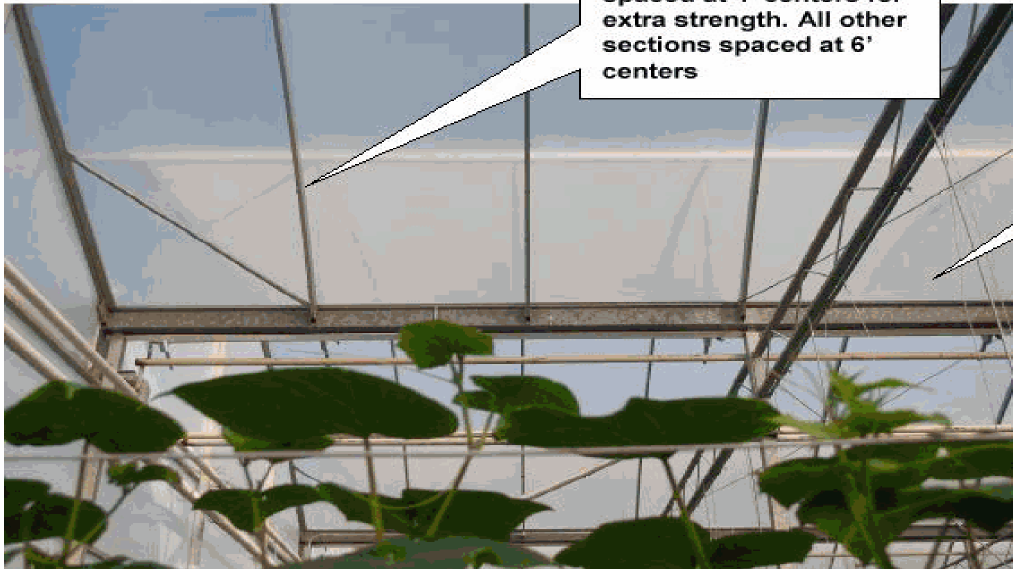
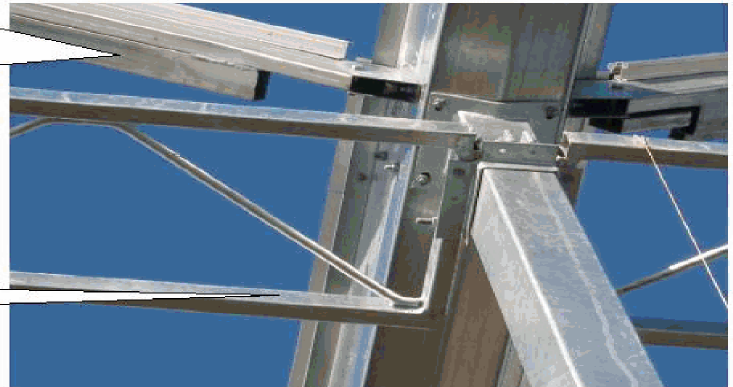
Advantage?

- More light
- No drip from braces
- Strength

Truss at the gable end is inverted for outside wind and inside crop load strength

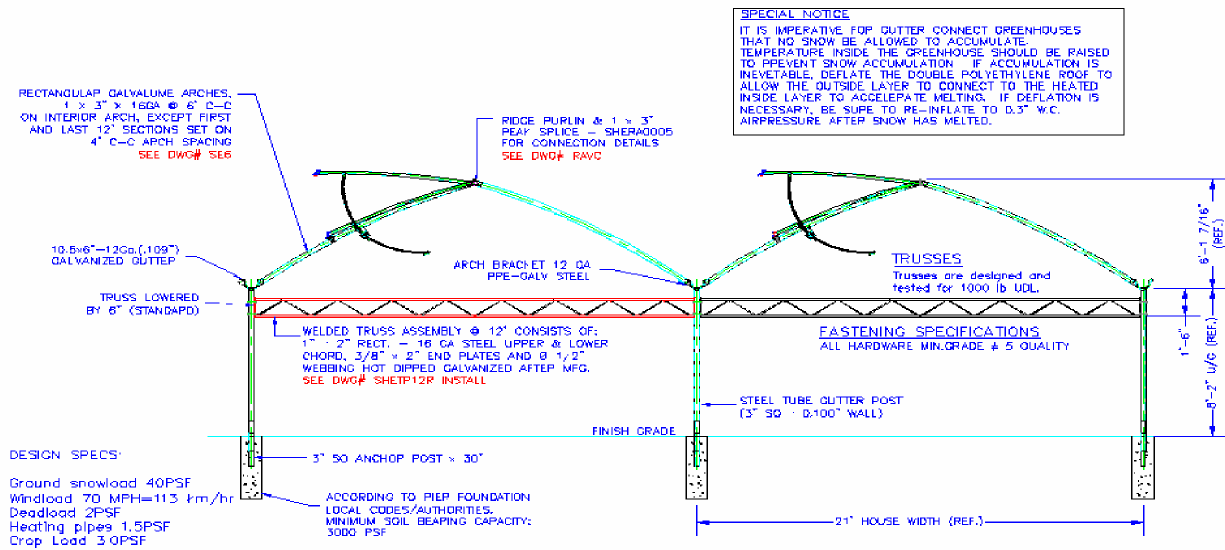
End sections arches and rack and pinions spaced at 4' centers for extra strength. All other sections spaced at 6' centers

Due to arch design poly does not sag at the gutter, preventing drips

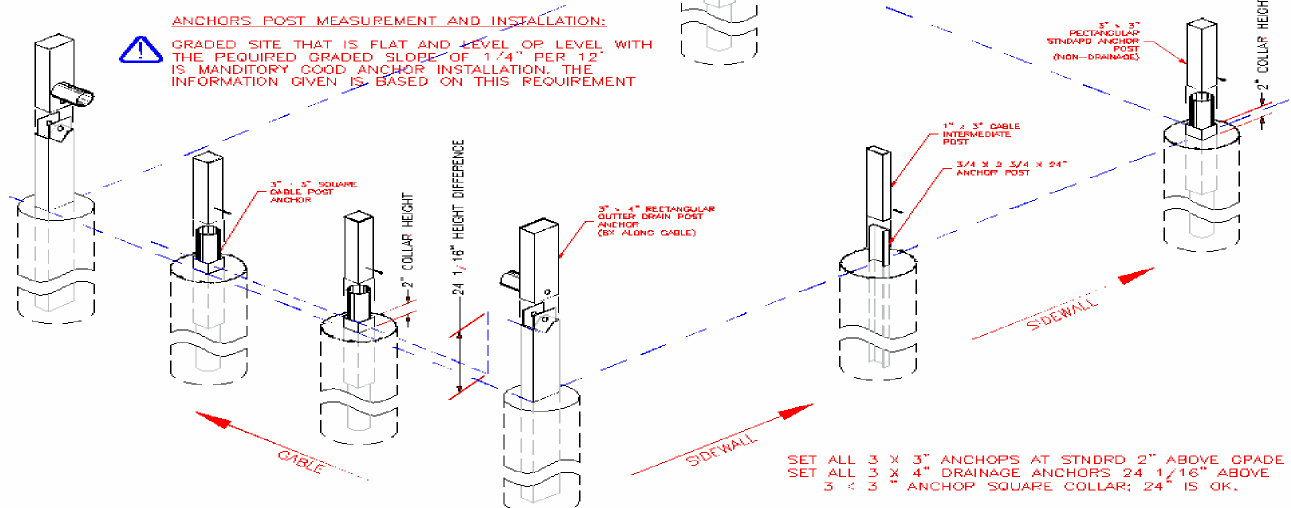


The drip gutter is supported every 6' (1.83m) to ensure there is no drip-gutter sag between posts, eliminating pooling of water or drip-gutters overflowing. This eliminates wet floors, and dripping water onto your crops reducing disease pressure.

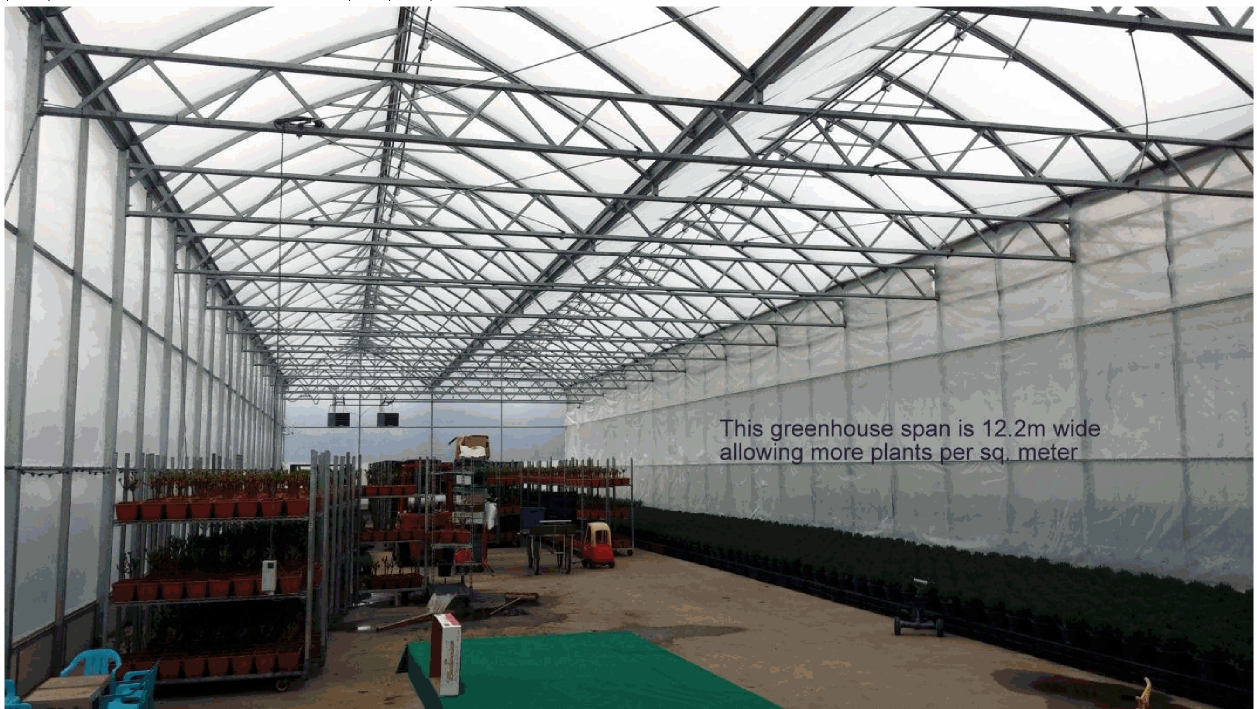
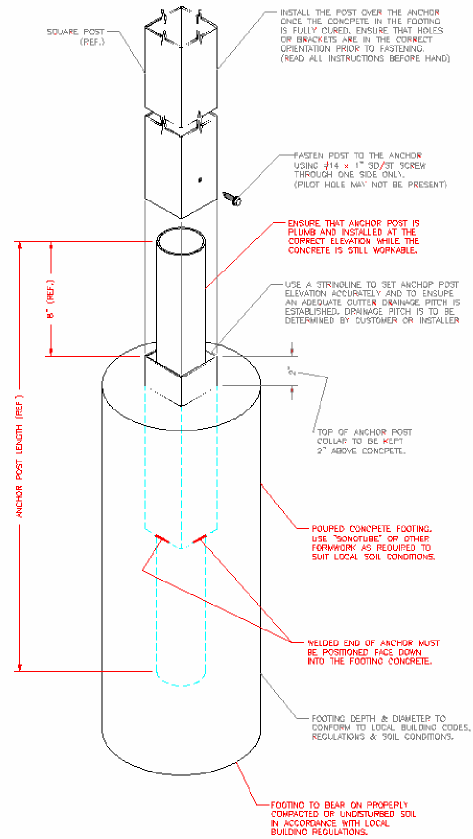
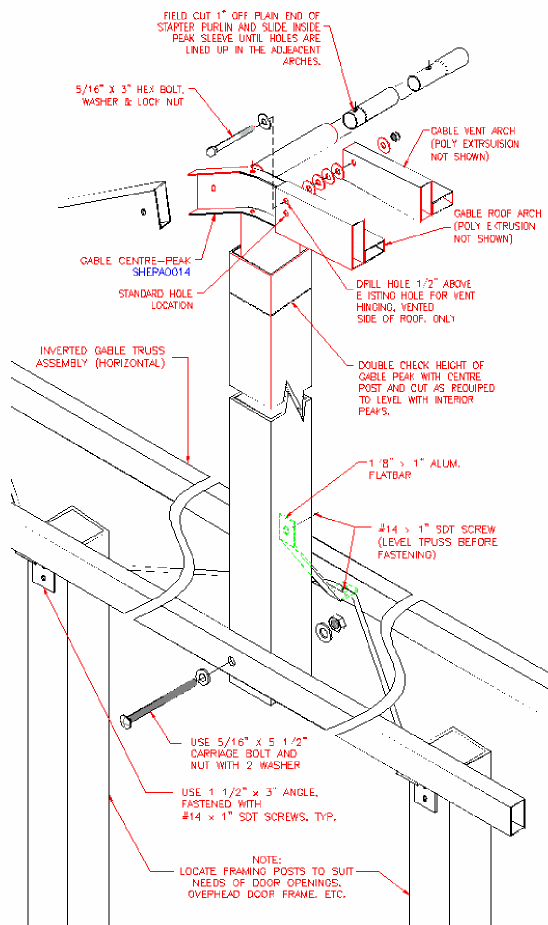
- Both our gutters and drip-gutters come with downspouts, so the condensed water can be taken down in a controlled manner. Your Greenhouse crop foliage is kept drier for more productive growth.
- Our roof arches are designed narrow and deep providing maximum strength with minimal light loss for increased photosynthesis. We can supply arches at 4' (1.2m) or 6' (1.83m) centers depending on wind load resistance your greenhouse needs.
- Our roof vents have a vent arch at every roof arch, with the vent arch hinges at the very peak of the arch.
- Then we attach Ridder Rack and pinion drive mechanism allowing for best fit climate screen (shade net) automation providing you ideal temperature and humidity control 24 hours a day.



- The roof vent and arches and the gable end arches are reinforced to ensure a perfect alignment and positive closure. This system is computer controlled to open and close based on temperature or approaching storms.
- Both the vent end arches and the vent bottom have rubber gaskets for a perfect seal maintaining an ideal growing climate inside. Roof vents can be fitted with our special German made insect screen with excellent air permeability keeping out unwanted pests allowing heat and humidity to pass outside when needed.
- We start with a strong foundation by providing separate anchor posts, simplifying the fabrication of your greenhouse kit. Our anchor posts are strong square or rectangular making the fastening of sidewall posts and support braces very easy. Keep in mind square 3" (762mm) posts with 4 corners are stronger than round.



- Our purlins are pre-drilled, they are pre-galvanized with a lacquer coating to prevent blackening of poly film.



- Produce more with a sustainable and innovative approach is what we do best. Our long range focus is the success of your business, starting with a well thought business plan and greenhouse systems making is easier to expand in the future when your business grows. We thank you for this opportunity to submit this proposal.

Based on 1-4 acres (4000-16000 sqm) we are pleased to quote:

- Growers look for a square block when sizing a greenhouse for its efficient set-up. When future expansions occur we advise to start with a 5000 sqm block, with a walkway along one gable end. When time comes to expand, you build on at the other side of the walk making your greenhouse 2 times larger. Ask us for more information.

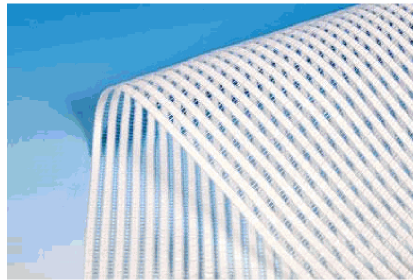
Before we provide a Detailed Price Quotation, these prices are per sq. meter of greenhouse area @ 12.2 Kg/sqm. Based on 6.1 meter gutter height, 51 m Length, 8.23 m span width at 8.63 m peak height. At CDN \$- US\$ X rate 0.785.

1. Tall Rig Greenhouse-8 mm twin wall polycarbonate side/end walls, double IR LD poly roof US\$ tba/sqm
2. Tall Rig Greenhouse Venlo Style with tempered glass – US \$tba/sqm

- Includes Fully Automated rack and pinion ventilation systems with temp/humidity sensors, controllers, motors, gear boxes, with rain/storm sensor.
 - Includes 5 Sliding Double Door 3.05m x 3.05m & hardware at gable ends.
 - Includes automated/shade open/close climate screen (shade nets).



Our climate shade screen opened ½ ways.



Harmony OE shade screen new generation of diffused light.



Solaro 38 % reflective white on black screen.

- Includes sidewall Purlin Kit for automated open/close climate screen (shade nets) system.
 - Includes Delivery up to \$3900/ 12 m (40foot) container CIF Port or door to door.
- Includes NHR Wireless 5 CO2 Sensors, 5 Temp/Humidity Sensors, 5 wifi routers and 1 Gateway Controller.
 - Includes Stamped and Sealed Engineered Blue Prints and installation manual.
- Detailed crop production plan and power point presentation with Profit analysis including all operating expenses and income based on 3 CIF (FOB) US \$ selling prices per KG for tomato production.
 - For onsite Electrical Hook up, Irrigation, Fertigation, Hanging Troughs, Ground Covers, Crop Wire/Suspension hooks add \$28/sqm based on costs in USA.
- Not Included are concrete work for inside driveways, permits and inspections by local authorities, site leveling, excavation of pond and trenching systems for roof drainage to pond or tanks, excavation for in-ground services, bringing services to your greenhouses, installation of computers, water, gas and CO2 systems.
- Not included are irrigation collection system, insurance, import duties, harvesting – Z lift worker carts, grading and packing facility, lunchroom, bathrooms and office space.

These numbers will cover the cost of your new greenhouses including onsite service from Team Suntex and our colleagues. Once you confirm you need an exact detailed quote with accurate numbers, we do the calculations for you and work with you where you need to be. We thank you for your time and please contact us for further information.

Respectfully,

Chris Carnell