

## Application of Fleece Crop Covers

Agricultural thermal fleece is specifically designed to provide climate protection for vegetables and ornamental crops, in open fields or under tunnel or greenhouse. The Covertan Pro range of product is designed to protect plants in real life conditions :

### Physical Protection

- Climatic conditions - frost, hail, wind
- Direct Pest damage - physical barrier to insects and deterrence of birds
- Vectored pest damage— transmission of viruses by insects (aphids, white fly)

### Growth Enhancement

- Microclimate that creates optimized photosynthetic efficiency though gains in temperature, hygrometry & CO<sub>2</sub> rates
- Precocity improvement due to increases in the local temperature around the plants. This can improve the earliness of crop from one to three weeks, which improves the early commercial yield and shortens the crop cycle
- Harvest quality and uniformity of the vegetables
- To improve the germination rate. As our fleece maintain a good hygrometry, they are recommended to enhance the germination rate. The density of the sowing can be reduced by 10% .

### Resource Maximisation

- Enhances Soil structure preservation and reduces compaction caused by heavy rainfall. The reduced compaction also enhances crop sowing.
- To decrease your need of irrigation: Because Covertan fleece is permeable, a part of the water evaporates, and a large part returns to the soil and the plant.

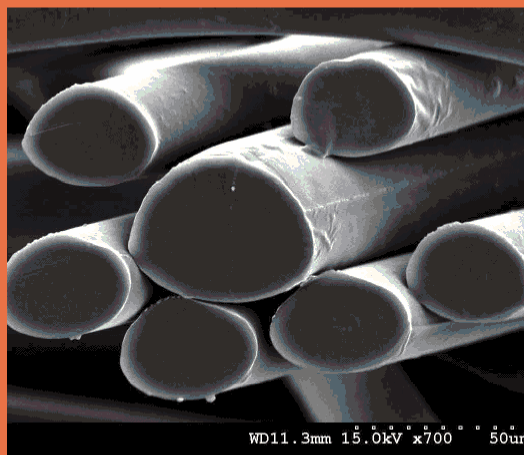
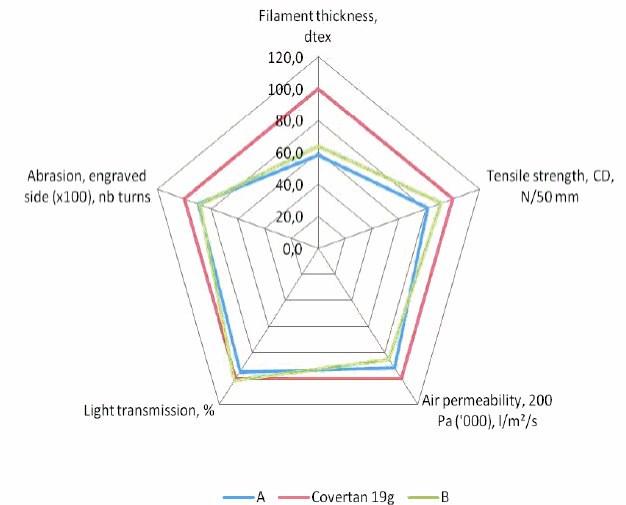


Suitability	17gsm	19gsm	22gsm	30gsm	60gsm
Thermal Effect	●	●	●	●	●
Micro Climate	●	●	●	●	●
Wind Protection	●	●	●	●	●
Soil Quality Protection	●	●	●	●	●
Pest Protection	●	●			
Over Wintering Protection				●	●

## Covertan Performances

Filament Thickness—Important for a number of physical strength attributes in agriculture:

- Very good mechanical resistance : - enables mechanical laying, saving time covering and uncovering
- Improved fleece reusability
- Enhanced UV resistance for the durability of the fleece
- Effective water and air permeability which improves plant growth conditions
- Light transmission necessary for a good photosynthesis
- Covertan's filaments are distributed in all space directions:
  - very good tearing resistance
  - very good distribution of water while raining or irrigating
- Covertan's welding is made of polypropylene:
  - very good mechanical resistance
  - recyclability
- A « Z folded fleece» for an easier laying



## Service and Supply

- Coverage of all sizes from 1 to 28 m wide fleece to cover all field sizes
- Reinforced edges to improve handlablility
- Manufactured in class leading ISO 9001 facility
- Quality tested and measured at all stages of manufacture including fleece production and welding
- Roll presentation typically 2.4 m to optimise transport efficiency
- A dedicated customer service for Agriculture twelve months of the year

**Tel: 1.941.706.0008 w: [suntexcp.com](http://suntexcp.com)**

**Tel: 1.416.738.8888 e: [chris@suntexcp.com](mailto:chris@suntexcp.com)**

**Sarasota, FL**

**Sayreville, NJ**

**Toronto, ON**

